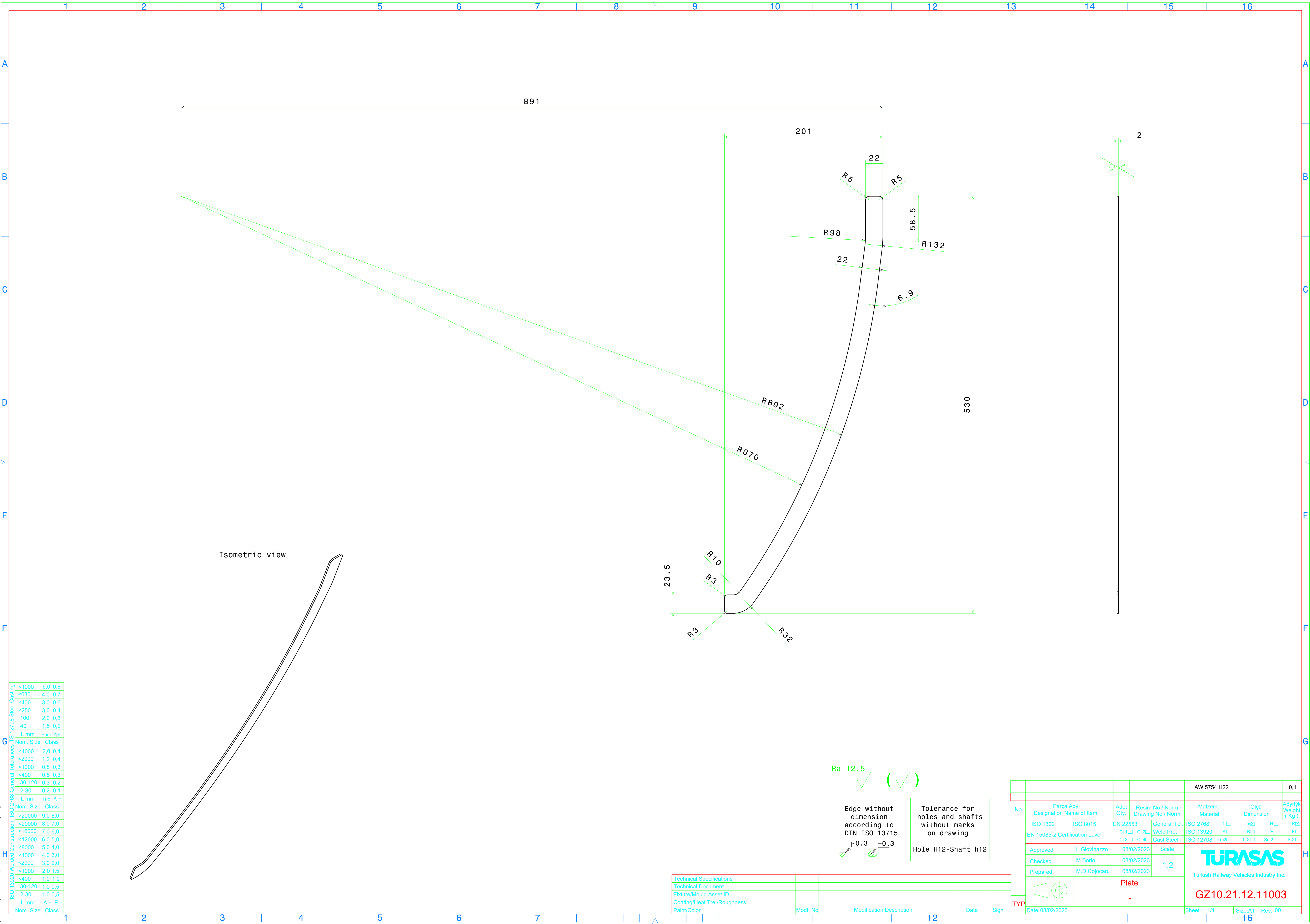


Reproduction or use of this document or its all contents in any form without the prior written permission of TURASAS is prohibited. Offenders will be liable for the payment of damages. All rights reserved in the event of the right of a patent, utility model, trademark, design, copyright.




ISO 13020 Welder Construction ISO 2768 General Tolerances TS 12708 Steel Casting		
<1000	6,0	0,8
<630	4,0	0,7
<400	3,0	0,6
<250	3,0	0,4
100	2,0	0,3
40	1,5	0,2
L mm	Ham	Ypl
Nom. Size	Class	
<4000	2,0	0,4
<2000	1,2	0,4
<1000	0,8	0,3
<400	0,5	0,3
30-120	0,3	0,2
2-30	0,2	0,1
L mm	m ±	K ±
Nom. Size	Class	
>20000	9,0	8,0
<20000	8,0	7,0
<16000	7,0	6,0
<12000	6,0	5,0
<8000	5,0	4,0
<4000	4,0	3,0
<2000	3,0	2,0
<1000	2,0	1,5
<400	1,0	1,0
30-120	1,0	0,5
2-30	1,0	0,5
L mm	A ±	E ±
Nom. Size	Class	

Ra 12.5

Edge without dimension according to DIN ISO 13715
-0.3 +0.3

Tolerance for holes and shafts without marks on drawing
Hole H12-Shaft h12

Technical Specifications					
Technical Document					
Fixture/Mould Asset ID					
Coating/Heat Tre./Roughness					
Paint/Color	Modf. No	Modification Description	Date	Sign	

					AW 5754 H22				0,1	
No	Parça Adı Designation Name of Item		Adet Qty.	Resim No / Norm Drawing No / Norm		Malzeme Material	Ölçü Dimension		Ağırlık Weight (kg)	
	ISO 1302	ISO 8015	EN 22553		General Tol.	ISO 2768	f □	mX □	H □	KX □
	EN 15085-2 Certification Level			CL1 □ CL2 □ CL3 □ CL4 □	Weld Pro. Cast Steel	ISO 13920	A □	B □	E □	F □
	Approved	L.Giovinazzo	08/02/2023		Scale	ISO 12708	Ln2 □	Lr2 □	Sm2 □	Sr2 □
	Checked	M.Borio	08/02/2023		1:2	<div>TURASAS</div> <div>Turkish Railway Vehicles Industry Inc.</div>				
	Prepared	M.D.Cojocaru	08/02/2023							
TYP			Plate			<div>GZ10.21.12.11003</div>				
			-							
Date:08/02/2023						Sheet : 1/1		Size:A1	Rev: 00	